



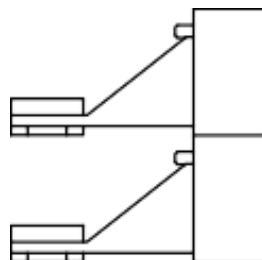
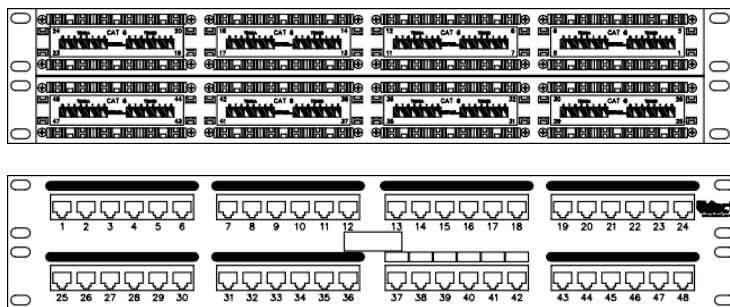
Part Number: LTP-2748-C6

Cat.5E/6 UTP 48-port Patch Panel

Product Description

Life Tech 48 port 2U 19" UTP Patch Panels offer you all the functionality and compatibility as any name brand. Each panel comes with 110-type termination, while meeting and exceeding EIA/TIA TSB-40 Cat6 connecting hardware specifications. Color coded for both EIA/TIA 568A & 568B installations. 48 ports ensure a wide range of plug-n-play options. The clear numbering on both the front and back of each panel gives you a quick and easy way to identify cable runs and the high density 19" 2U panel design will save you valuable space in the rack.

Structure



Technical Specifications

Panel	1.5mm SPCC with Black color painting
RJ45 Housing	PBT
RJ45 Contact Material & Finished	Phosphor Bronze With 50-60" Nickel plated
	Contact area: Min. 3mm 3" Gold plated
IDC House	PC
IDC Terminal Material & Finished	Phosphor Bronze with 50" Tin-Lead plated. over 50-60" Nickel plead.
	100 & krone tool compatible
	Use for 23-24AWG stranded and solid wire
Jack Bracket Set	ABS Black color
Property	The IDC color combines two wirings of T568A & T568B.
Insertion Force	900 grams for 8 contacts.
Retention Temperature	-30° C to 70° C
Jack Durability	Jack: 750 cycles Plug- Jack mating and unmating test, Insertion cycles at 20 cycles/minute max. Contact resistance test per 100 cycles.
IDC Durability	Max, 200 pinching times.
Standards Compliant	The Cat.6 performance is in compliance with the ANSI/ TIA/ EIA 568 B. 2 Standard Jack